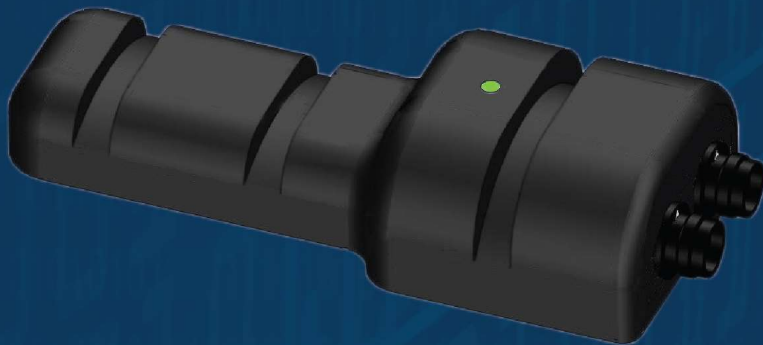


CAN Current Module

Non-Intrusive Current Measurement Module
Provides fast effortless current sensing for AC and DC currents.
Measures currents from 1A to 500 A.
The Current Module's data and configuration conforms to the CANopen specification. The CAN interface and power are galvanically isolated.

REACH
TECHNOLOGIES INC.



CAN Interface Specifications

Connector Type	■ M12 5-pin
Protocol	■ CANopen
Bit Rates	■ 20 kbps to 1 Mbps

Device configuration via CANopen data dictionary

CANopen

Measurement Specifications

Sensor	■ Dual Hall Effect - low and high current sensors
Sensor bandwidth	■ 75 kHz
AC Measurement	■ True RMS over reporting period
DC Measurement	■ Average of sampled values over reporting period
	■ Peak value during sample period
Accuracy	■ ±1 % of full-scale (calibration dependent)
Transient Detection	■ Peak current transient detection (event & capture)
Waveform capture	■ Record up to 10 sec at 10 ksps (waveform capture) (Post-capture upload via CAN)

Physical Specifications

Voltage	■ 9 VDC to 36 VDC	Material	■ UV Stabilized Urethane Rubber
Power Consumption	■ 600 mW	Height	■ 1.0" 2.5 cm
Ambient Temperature Range	■ -50 °C to 85 °C	Width	■ 1.8" 4.6 cm
Storage Temperature Range	■ -50 °C to 95 °C	Length	■ 4.3" 10.8 cm
Relative Humidity	■ 5% to 99%	Weight	■ 2.9 oz 83 g
IP Rating	■ IP 67		
Galvanic Isolation			
Power	■ 2500 VRMS Isolation Rating per UL 1577		
CAN	■ 5000 VRMS for 1 minute per UL 1577		

Ordering Information

CAN-CUR-NL-M	■ M12 5-pin connector	WiFi Version	■ CAN-CUR-NL-W
CAN-CUR-NI-L	■ Lemo 9-pin connector		
CAN-CURRENT-NI-CAL	■ Calibration Kit		

www.reachtest.com